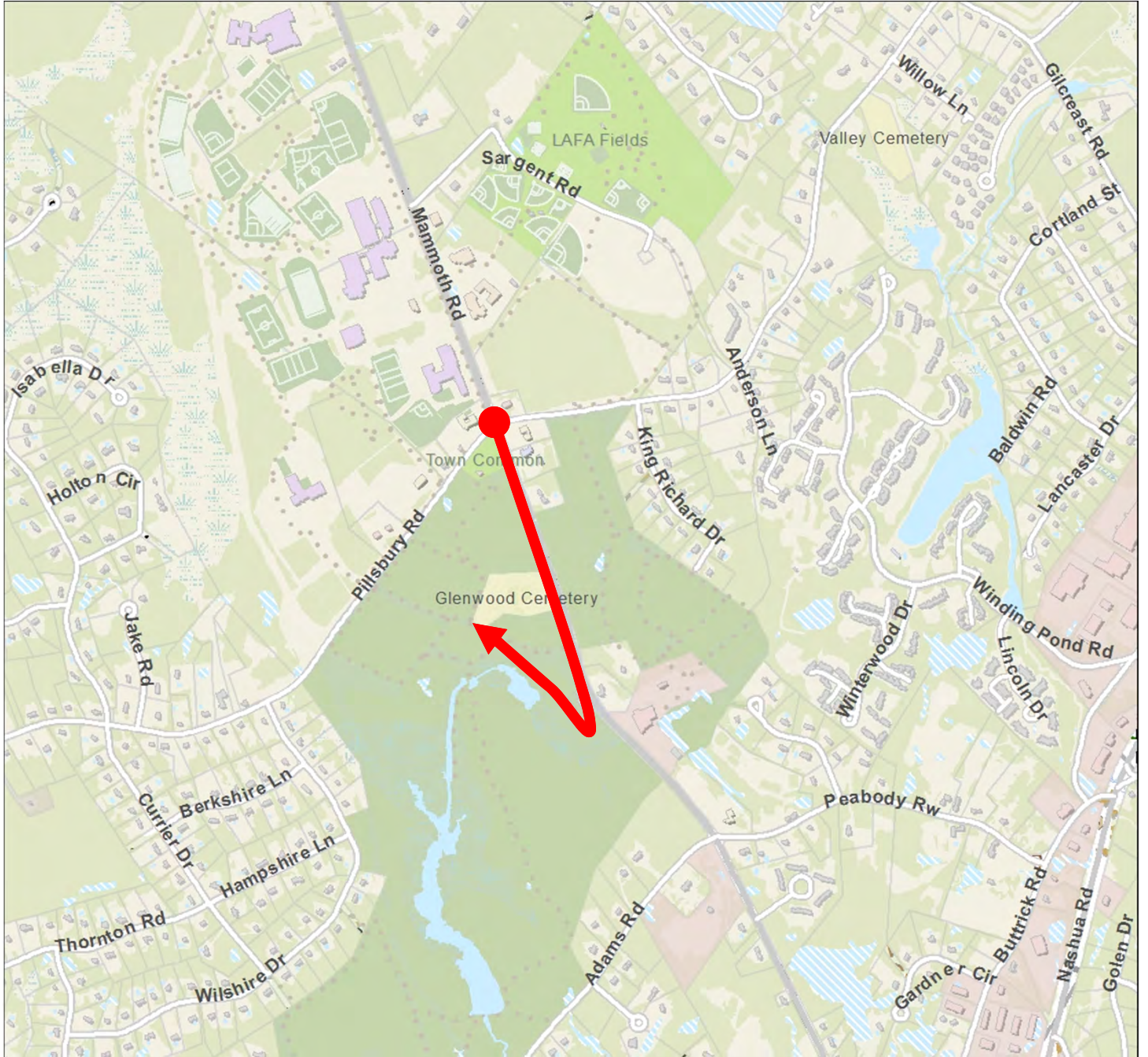


Directions to the Adams Pond/Moose Hill Orchard Conservation Area, Londonderry



From the Town Center (Intersection of Pillsbury/Mammoth Road):

Travel South on Mammoth Road (NH 128). After Glenwood Cemetery, 1st Right onto dirt road. Park along dirt road. Look for Trailhead and Kiosk on Left past plowed field.